

JS-50 WX

spec sheet

JoeScan

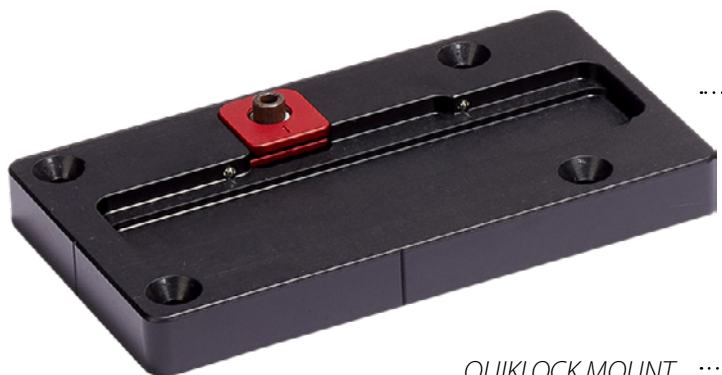
LINEAL + TRANSVERSE 3D LASER SCANNER



SIMPLE. RELIABLE. COST-EFFECTIVE.



SINGLE CABLE CONNECTOR



QUIKLOCK MOUNT

MADE FOR SAWMILLS

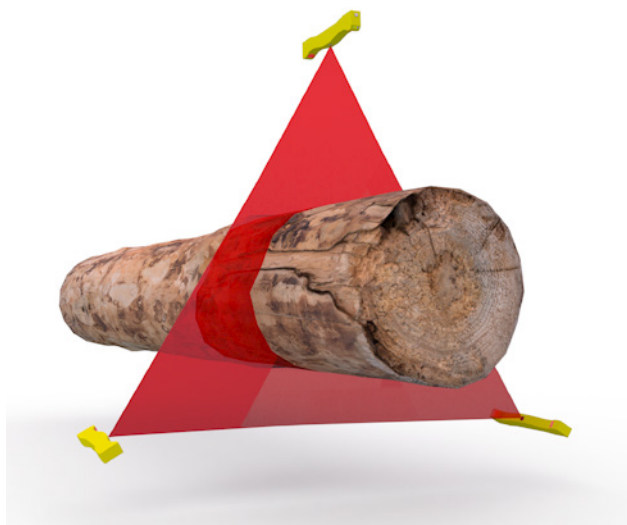
JS-50 WX

spec sheet

MADE FOR SAWMILLS

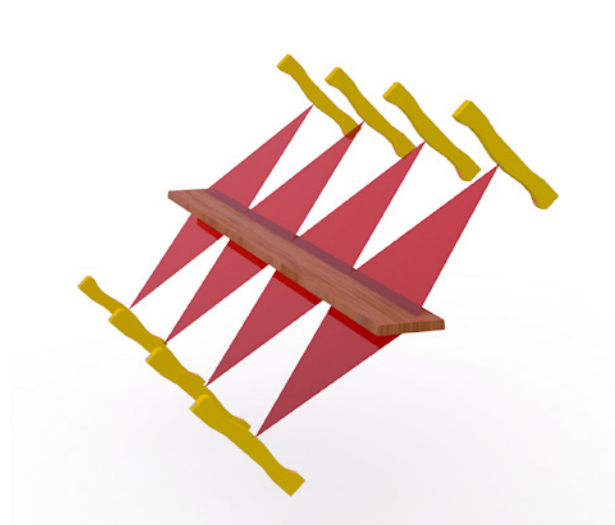
DATA	NEAR		FAR
	Resolution	$\pm 0.005"$ ($\pm 0.13mm$)	$\pm 0.02"$ ($\pm 0.5mm$)
	Density	72 points per inch (28 points per cm)	23 points per inch (9 points per cm)
	Max Speed	4000 profiles per second	
	Points per Profile	Up to 1456	
GENERAL	Power	IEEE 802.3 af Power over Ethernet	
	Laser Type	Pulsed, Class 3R	
	Laser Color	Visible red	
	Computer	Single standard PC per system	
	Data Interface	Gigabit Ethernet	
	Weight	5 lbs (2.3kg)	
	Operating Temp	0° to 120°F (-20° to 50°C)	
	Storage Temp	-40° to 176°F (-40° to 80°C)	
	Lighting	Fully operational between indoor lighting (no sunlight) and complete darkness	

LINEAL SCANNING



- Covers speeds up to 5,000 feet per minute (25m/sec)
- Scans any diameter logs with group coverage

TRANSVERSE SCANNING



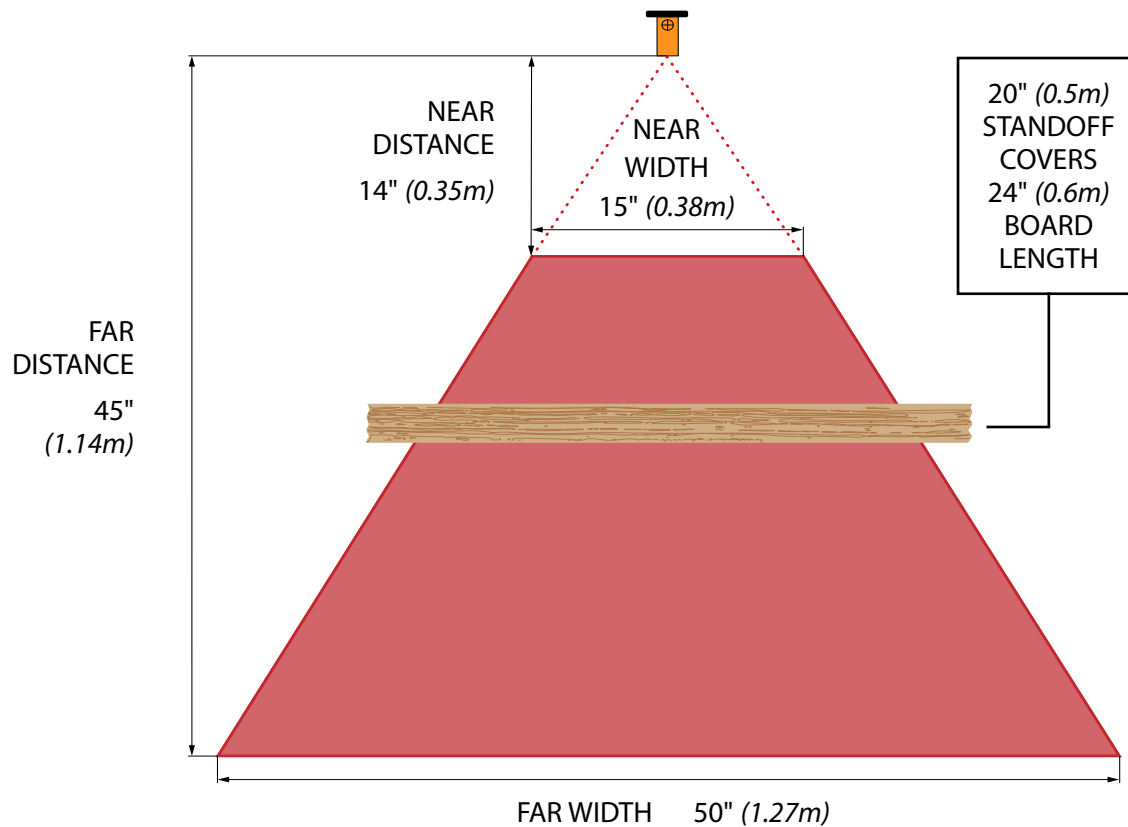
- 2 banks of scanners see all 4 faces of boards
- Scans any length boards with 24" between scanners (0.6m)



JS-50 WX

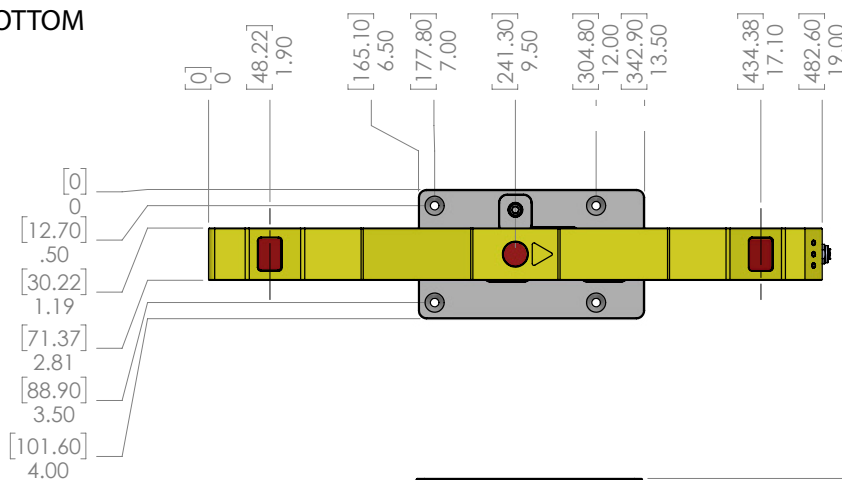
spec sheet

MADE FOR SAWMILLS

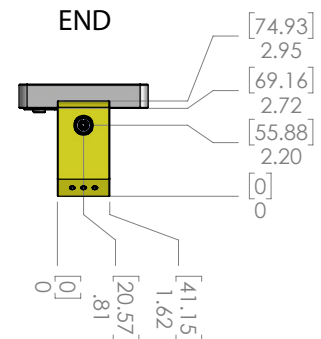


JS-50 WX can collect data outside of these ranges with reduced specs

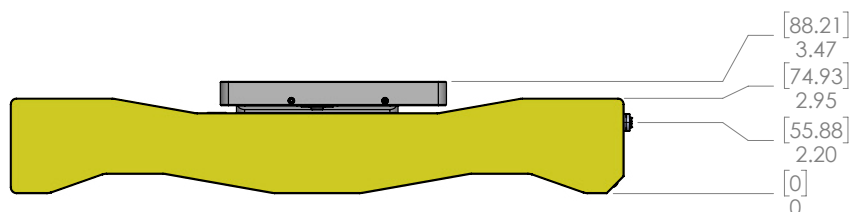
BOTTOM



END



FRONT



3D MODELS AVAILABLE AT JOESCAN.COM

JS-50 WX

spec sheet

MADE FOR SAWMILLS



5 YEAR WARRANTY
10 YEAR SUPPORT
LIFETIME COMMITMENT

At JoeScan, we make scanners for sawmills.

Our only focus is to deliver results for our sawmill partners. We have more than 5,000 scanners installed in sawmills all over the world, and our very first scanners are still running strong, over 20 years later.

Since 2002, we've learned what works for sawmills.

We keep our solutions simple.

We make sure that everything we make can stand up to the rigors of the sawmill environment, day after day, year after year.

And we work hard to deliver cost-effective scanning solutions for the sawmill industry.

Because we are committed to serving our partners, JoeScans are made for sawmills. If you'd like to become one of our partners, we are ready to prove it to you.

Let's chat.

4510 NE 68th Drive, Suite 124
Vancouver, WA, USA 98661

+1.360.993.0069

info@joescan.com