

JS-50 Z8

spec sheet

JoeScan

SUPER SNAPSHOT END-DOGGER + SHORT-COUPLED LOGS



3 INCH LASER SPACING

PULSED LASERS x8

SIMPLE. RELIABLE. COST-EFFECTIVE.



SINGLE CABLE CONNECTOR



NEXT-GEN SPEED
& RESOLUTION

MADE FOR SAWMILLS

JS-50 Z8

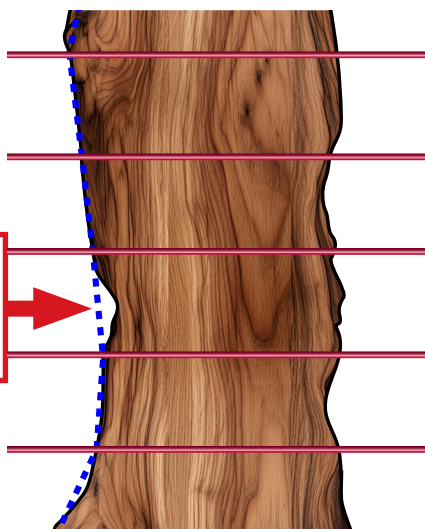
spec sheet

MADE FOR SAWMILLS

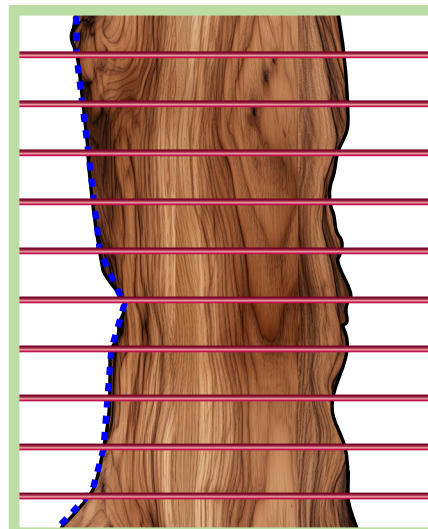
DATA

	END-DOGGER	SHORT-COUPLED LOGS
Model Number	JS-50 Z8-30	JS-50 Z8-20
Near Resolution	+/- 0.03" (+/-0.8mm)	+/- 0.08" (+/-2.0mm)
Far Resolution	+/- 0.08" (+/-2.0mm)	+/- 0.1" (+/-2.5mm)
Near Density	34 points per inch	40 points per inch
Far Density	19 points per inch	29 points per inch
Max Speed	up to 222 scans per second	
Points per Profile	1456	

Traditional 6 INCH laser spacing



New 3 INCH Super Snapshot



Z8's industry best 3-inch laser spacing can see what other snapshot scanners can't.

It delivers fewer and smaller pockets of undetected wane from your primary breakdown, improving your recovery and value of boards produced downstream.

BOTH MODELS

Power	IEEE 802.3 af Power over Ethernet (13W)
Laser Type	Pulsed Class 3R (50mW)
Laser Color	Visible red
Computer	Shares Optimizer PC
Data Interface	Gigabit Ethernet, M12 connector
Weight	7 lbs (3.18 kg)
Operating Temp	0° to 120°F (-20° to 50°C)
Storage Temp	-40° to 176°F (-40° to 80°C)
Lighting	Fully operational between indoor lighting (no sunlight) and complete darkness

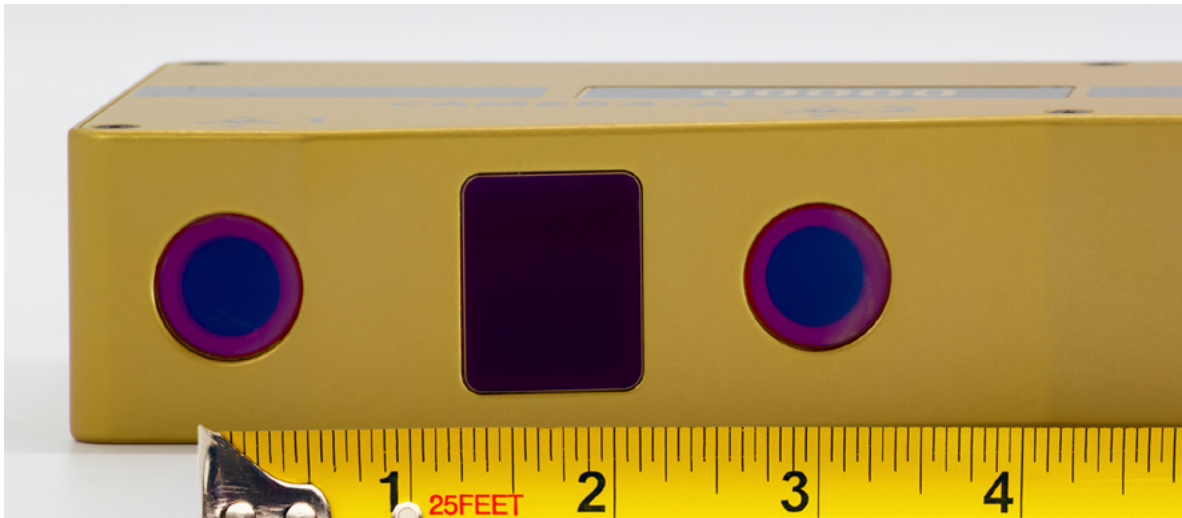


JoeScan

JS-50 Z8 Applications

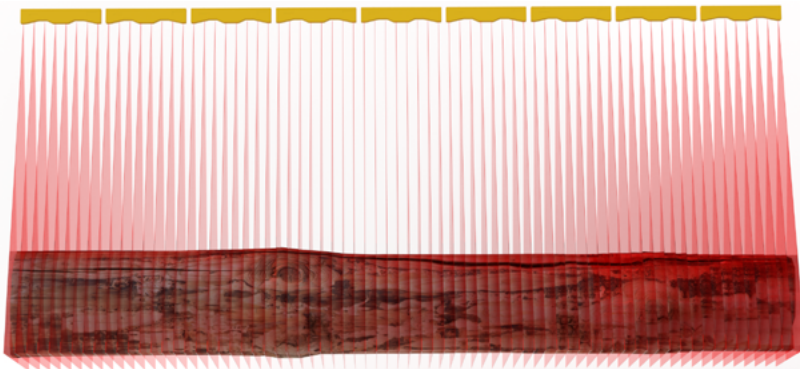
Super Snapshot Scanning

Designed specifically for applications where the log or board cannot be moved during scanning. Z8 doubles the density of true-snapshot scans, giving you twice as much information to make a good cutting decision.



The 3 Inch Difference

- ✓ Prevent undetected wane in your primary breakdown and improve the quality and value of your finished lumber.
- ✓ Scan entire lengths of logs or boards in just 3 inches of travel for multizone linear applications.



Available in two configurations:

End-dogger, C-frame

JS-50 Z8-30

36" to 96" standoff

(0.91m to 2.44m)

Short-coupled Carriage

JS-50 Z8-20

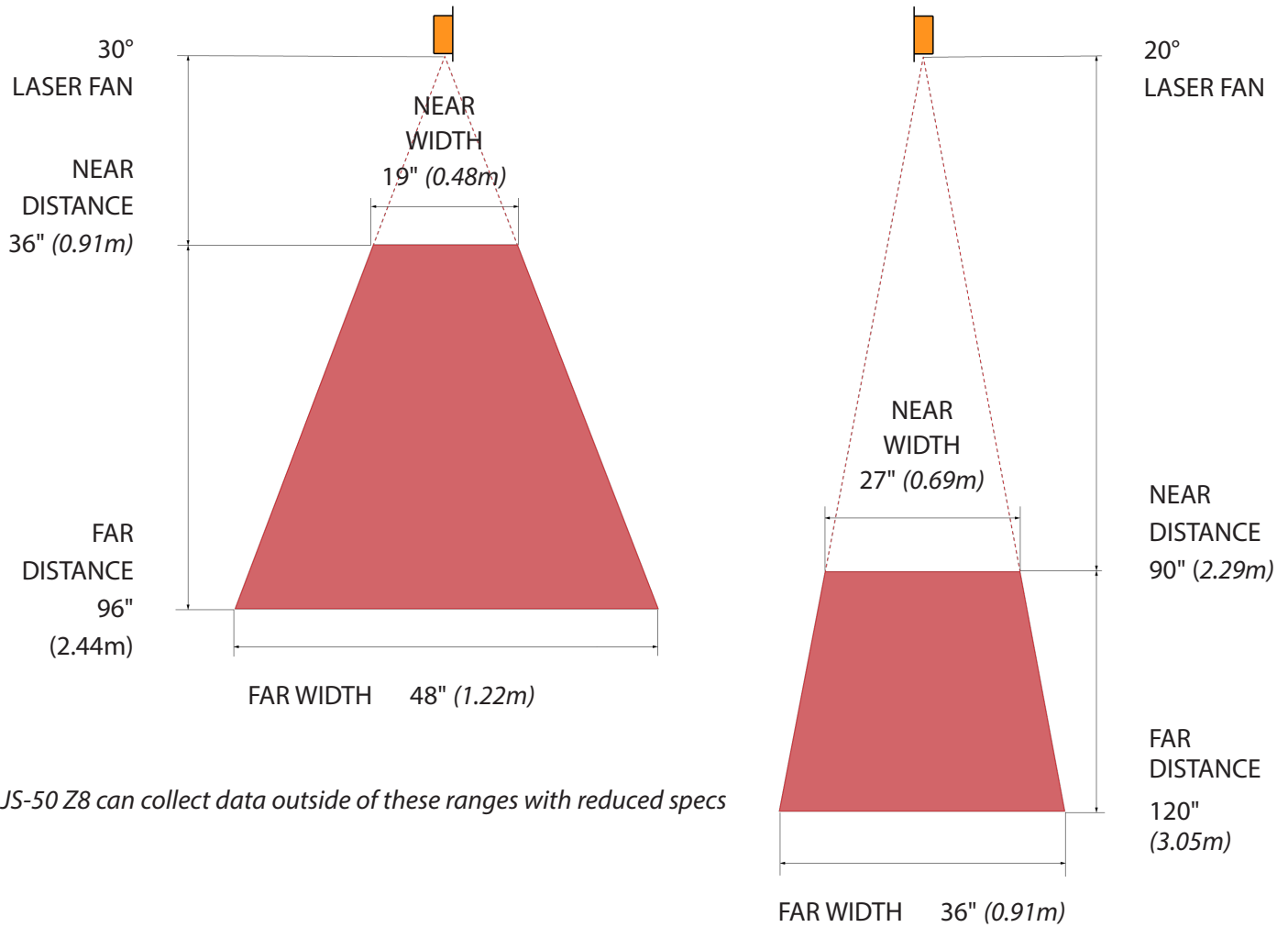
90" to 120" standoff

(2.29m to 3.05m)

JS-50 Z8

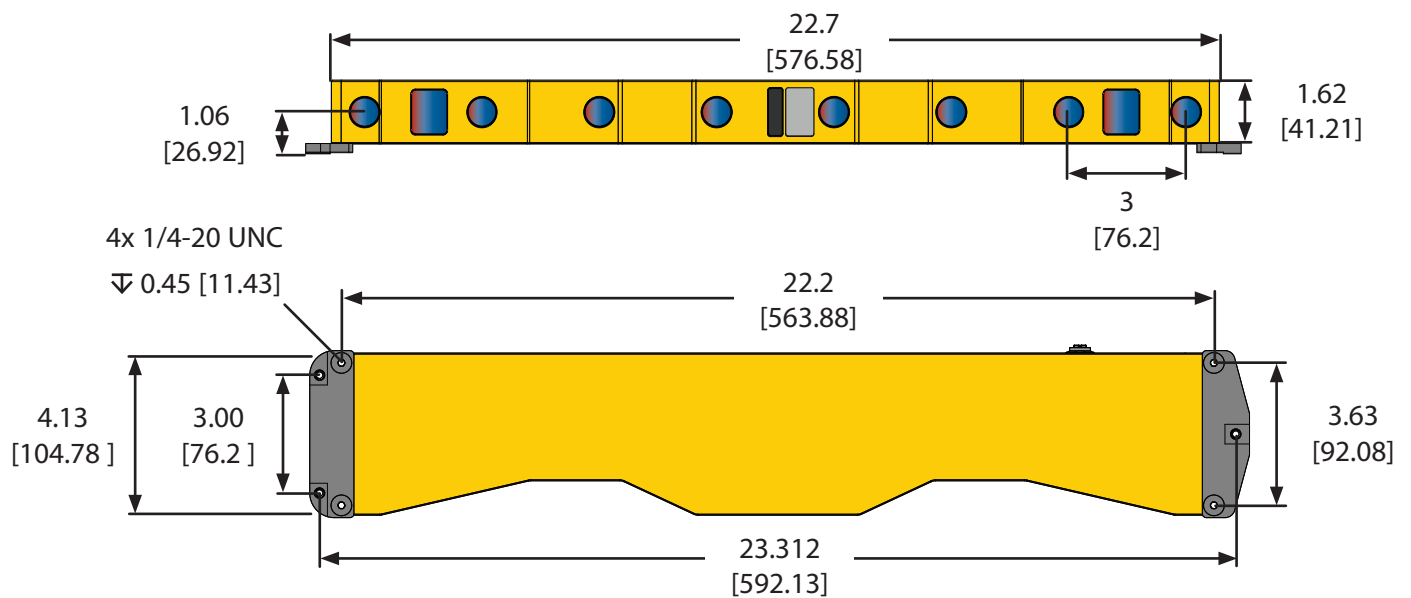
spec sheet

MADE FOR SAWMILLS



JS-50 Z8 can collect data outside of these ranges with reduced specs

BOTH MODELS



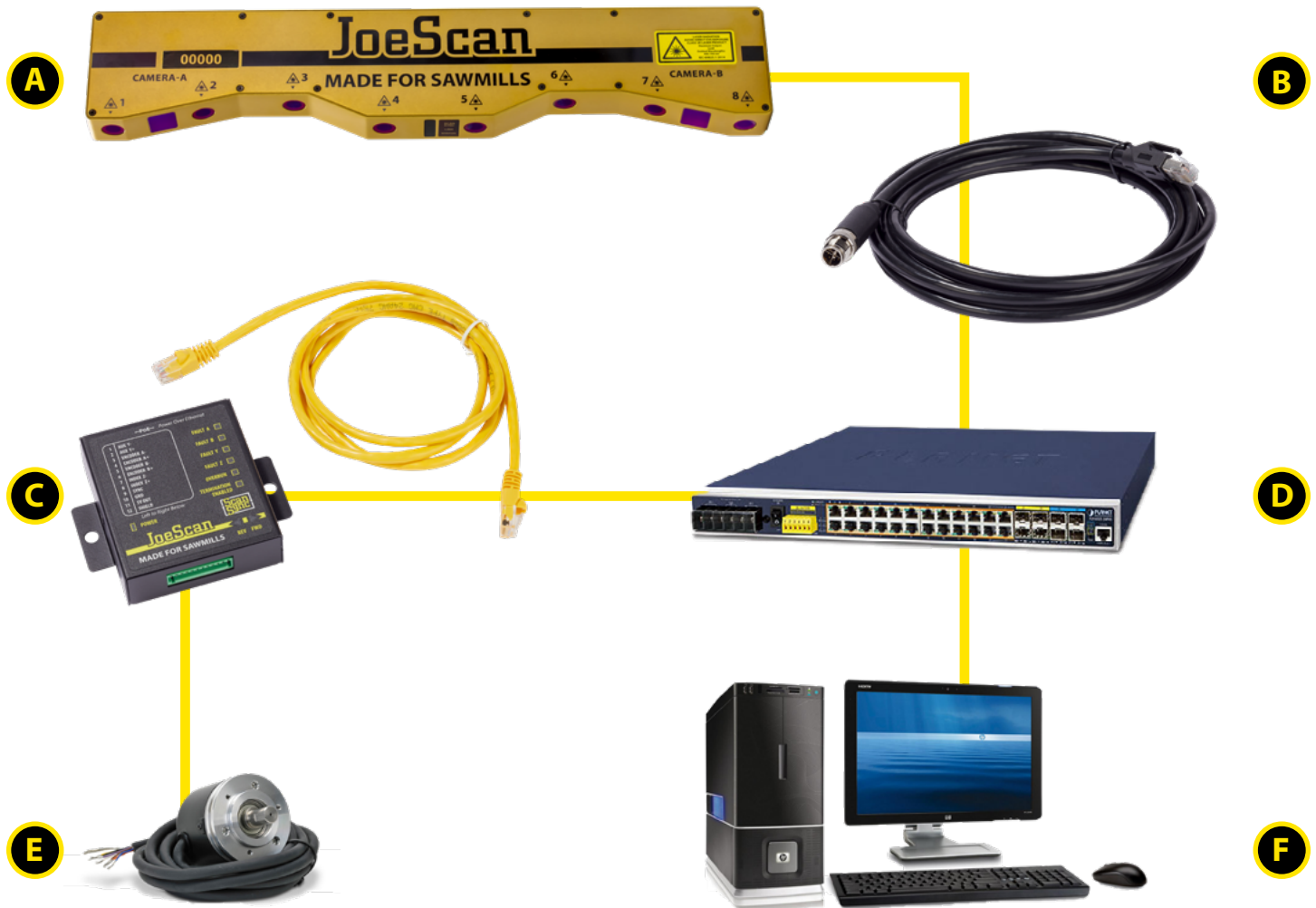
3D MODELS AVAILABLE AT JOESCAN.COM

JoeScan

JS-50 Z8 System

Simplicity, Reliability, Performance

*JS-50's unique sawmill-first features enable a robust and easy-to-use scanning system.
It's a great choice for both new equipment and optimizer upgrades.*



A JS-50 Z8 scan head
to **D** PoE port with at least 13w

C ScanSync module & ethernet cable
to **D** PoE port

E Quadrature encoder
with 5v output differential

PoE ethernet cable
M12 jack / Cat6e / RJ45

PoE ethernet switch
meets IEEE 802.3af-2003

Optimization PC
running MS Windows & Bonjour service

JS-50 Z8

spec sheet

MADE FOR SAWMILLS



5 YEAR WARRANTY
10 YEAR SUPPORT
LIFETIME COMMITMENT

At JoeScan, we make scanners for sawmills.

Our only focus is to deliver results for our sawmill partners. We have more than 5,000 scanners installed in sawmills all over the world, and our very first scanners are still running strong, over 20 years later.

Since 2002, we've learned what works for sawmills.

We keep our solutions simple.

We make sure that everything we make can stand up to the rigors of the sawmill environment, day after day, year after year.

And we work hard to deliver cost-effective scanning solutions for the sawmill industry.

Because we are committed to serving our partners, JoeScans are made for sawmills. If you'd like to become one of our partners, we are ready to prove it to you.

Let's chat.

4510 NE 68th Drive, Suite 124
Vancouver, WA, USA 98661

+1.360.993.0069

info@joescan.com