

JS-50 X6B

spec sheet

JoeScan

SNAPSHOT SCANNER CARRIAGE HEADRIG + SHORT-INFEED EDGER



SCAN ANY LENGTH in
6 INCHES of TRAVEL

PULSED LASERS x6

SIMPLE. RELIABLE. COST-EFFECTIVE.



SINGLE CABLE CONNECTOR



NEXT-GEN SPEED
& RESOLUTION

MADE FOR SAWMILLS

JS-50 X6B

spec sheet

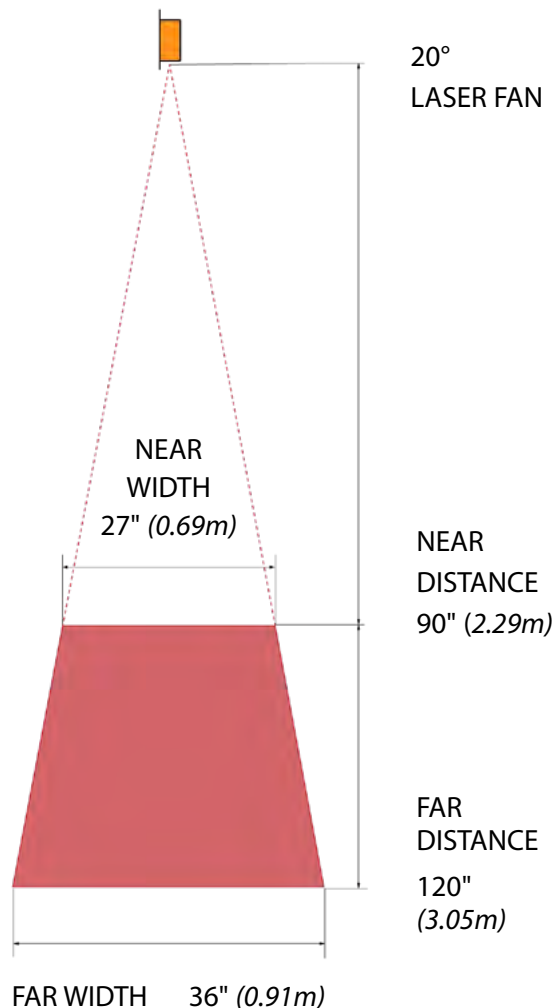
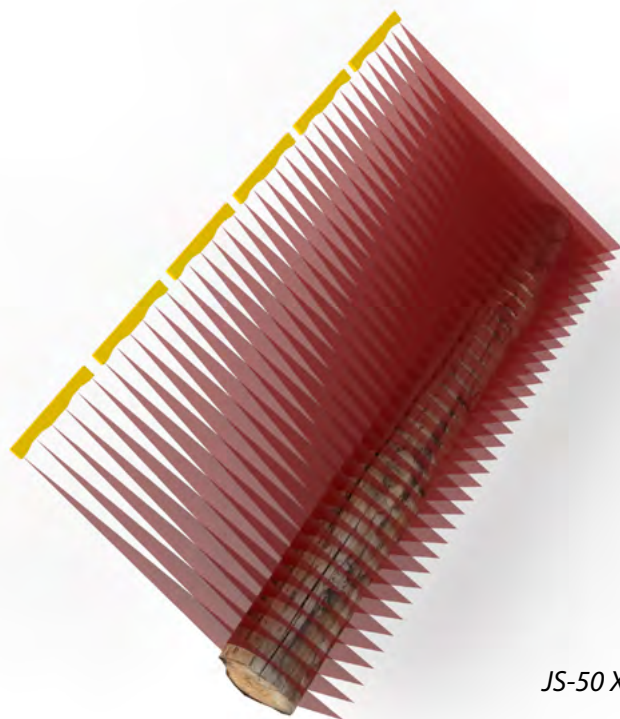
20° model

MADE FOR SAWMILLS

CARRIAGE HEADRIG

DATA

| | |
|--------------------|----------------------------|
| Model Number | JS-50 X6B-20 |
| Near Resolution | +/- 0.08" (+/-2.0mm) |
| Far Resolution | +/- 0.1" (+/-2.5mm) |
| Near Density | 40 points per inch |
| Far Density | 29 points per inch |
| Max Speed | up to 333 scans per second |
| Points per Profile | 1456 |



JS-50 X6B can collect data outside of these ranges with reduced specs

BOTH MODELS

| | |
|----------------|---|
| Power | IEEE 802.3 af Power over Ethernet (13W) |
| Laser Type | Pulsed Class 3R (50mW) |
| Laser Color | Visible red |
| Computer | Shares Optimizer PC |
| Data Interface | Gigabit Ethernet, M12 connector |
| Weight | 9 lbs (4.08 kg) |
| Operating Temp | 0° to 120°F (-20° to 50°C) |
| Storage Temp | -40° to 176°F (-40° to 80°C) |
| Lighting | Fully operational between indoor lighting (no sunlight) and complete darkness |

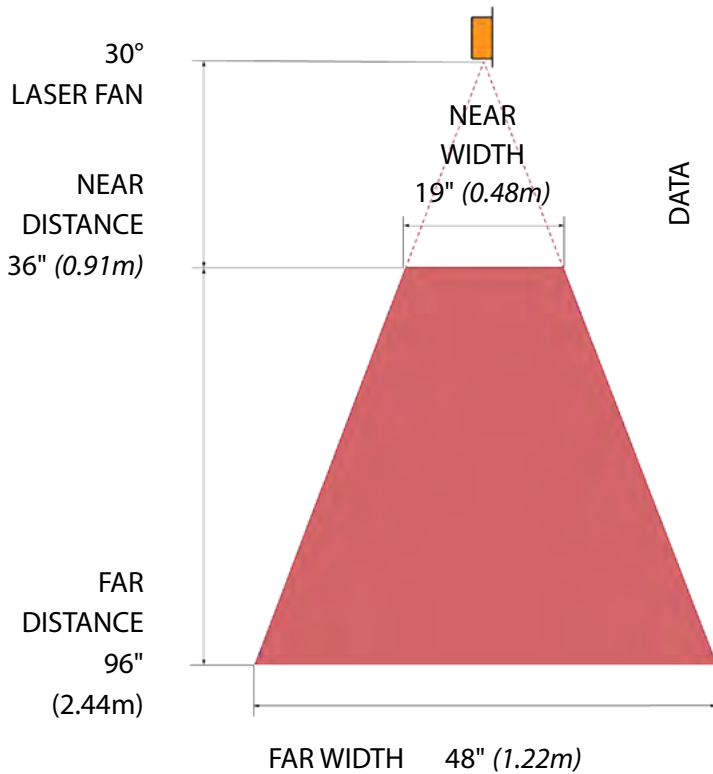


JS-50 X6B

spec sheet

30° model

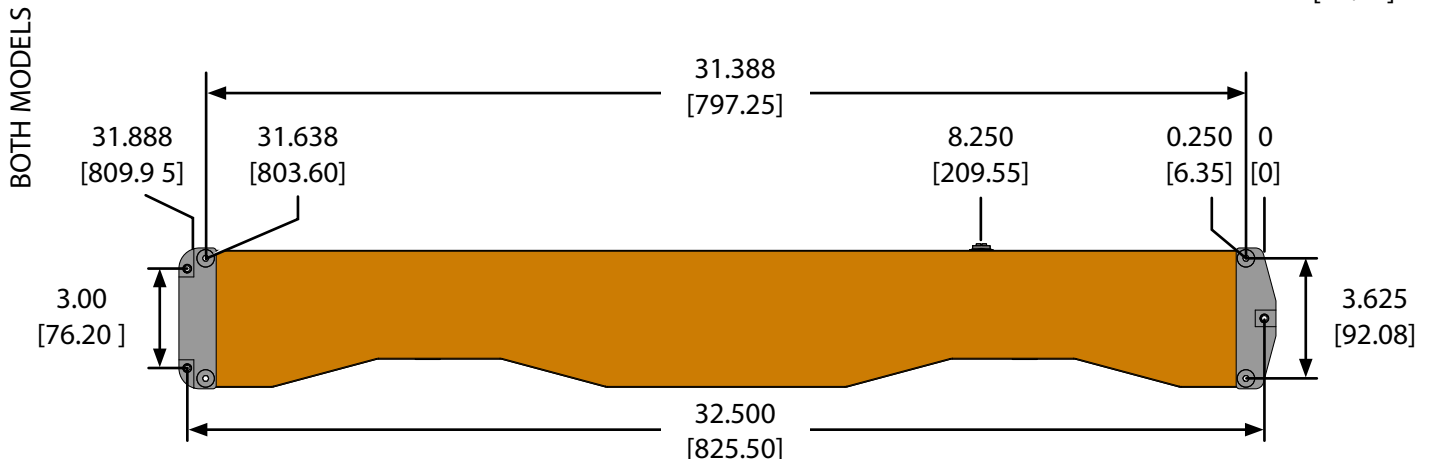
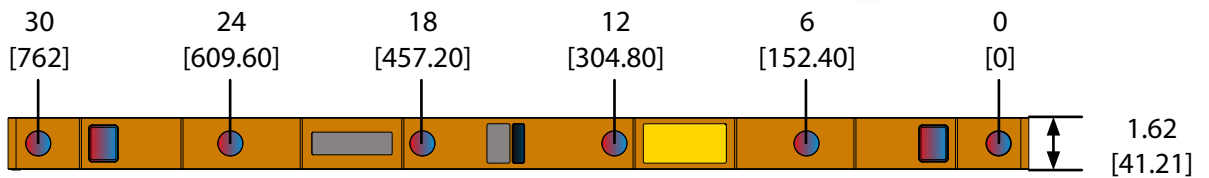
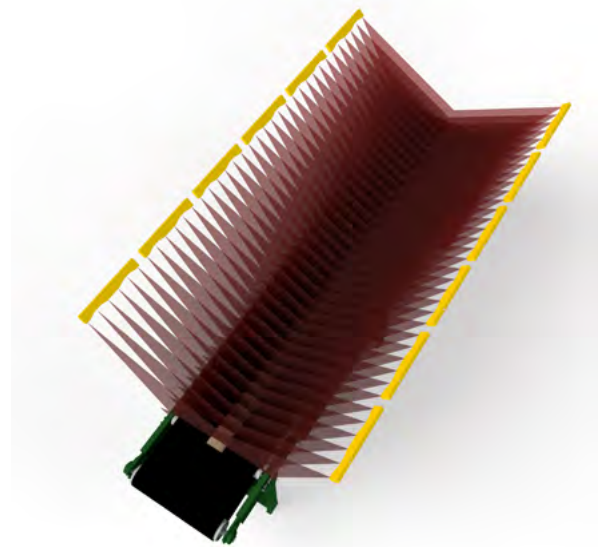
MADE FOR SAWMILLS



SHORT-INFEED EDGER

DATA

| | |
|--------------------|----------------------------|
| Model Number | JS-50 X6B-30 |
| Near Resolution | +/- 0.03" (+/-0.8mm) |
| Far Resolution | +/- 0.08" (+/-2.0mm) |
| Near Density | 34 points per inch |
| Far Density | 19 points per inch |
| Max Speed | up to 333 scans per second |
| Points per Profile | 1456 |



3D MODELS AVAILABLE AT JOESCAN.COM

JS-50 X6B

spec sheet

MADE FOR SAWMILLS



5 YEAR WARRANTY
10 YEAR SUPPORT
LIFETIME COMMITMENT

At JoeScan, we make scanners for sawmills.

Our only focus is to deliver results for our sawmill partners. We have more than 5,000 scanners installed in sawmills all over the world, and our very first scanners are still running strong, over 20 years later.

Since 2002, we've learned what works for sawmills.

We keep our solutions simple.

We make sure that everything we make can stand up to the rigors of the sawmill environment, day after day, year after year.

And we work hard to deliver cost-effective scanning solutions for the sawmill industry.

Because we are committed to serving our partners, JoeScans are made for sawmills. If you'd like to become one of our partners, we are ready to prove it to you.

Let's chat.

2311 E 1st Street
Vancouver, WA, USA 98661
+1.360.993.0069
info@joescan.com